



A Location Where Life Blossoms

Just as the lotus rises from the mud to bloom in full beauty, Kings Lotus is rooted in a rapidly growing neighborhood, set to become one of the most sought-after addresses. Positioned along Gataka Road in Ongata Rongai, this is where connectivity, convenience, and tranquility come together—offering a home that is grounded in strength yet elevated in elegance.

- Centrally Located – Situated along Gataka Road, offering seamless connectivity.
- Proximity to Ongata Rongai & Ngong Town – Only 5 minutes to Ongata Rongai and 10 minutes to Ngong Town.
- Renowned Educational Institutions Nearby – Close to top schools such as Apex Boys High School, Thorn Tree School, Ongata Royal Academy, and Precious Gems School Ongata Rongai.
- Prestigious Universities & Colleges – Convenient access to Multimedia University of Kenya, Cooperative University, Adventist University of Africa, and Kenya School of Law.
- Vibrant Shopping & Entertainment Hubs – Near premier malls, The Hub Karen, Karen Provision Center Hardy, Masai Mall, and Maiyan Mall.
- State-of-the-Art Healthcare Facilities – Close to Mount Olive Hospital, The Karen Hospital Rongai, Avenue Rongai Medical Centre, and King David Hospital.
- Recreational & Sports Facilities – Easy reach to Sinoni Sports Club Rongai, Nakeel Stadium, Karen Country Club, and Ngong Stadium for an active lifestyle.

A PROJECT BY
KINGS
 DEVELOPERS LIMITED
 enhancing lifestyle ●●

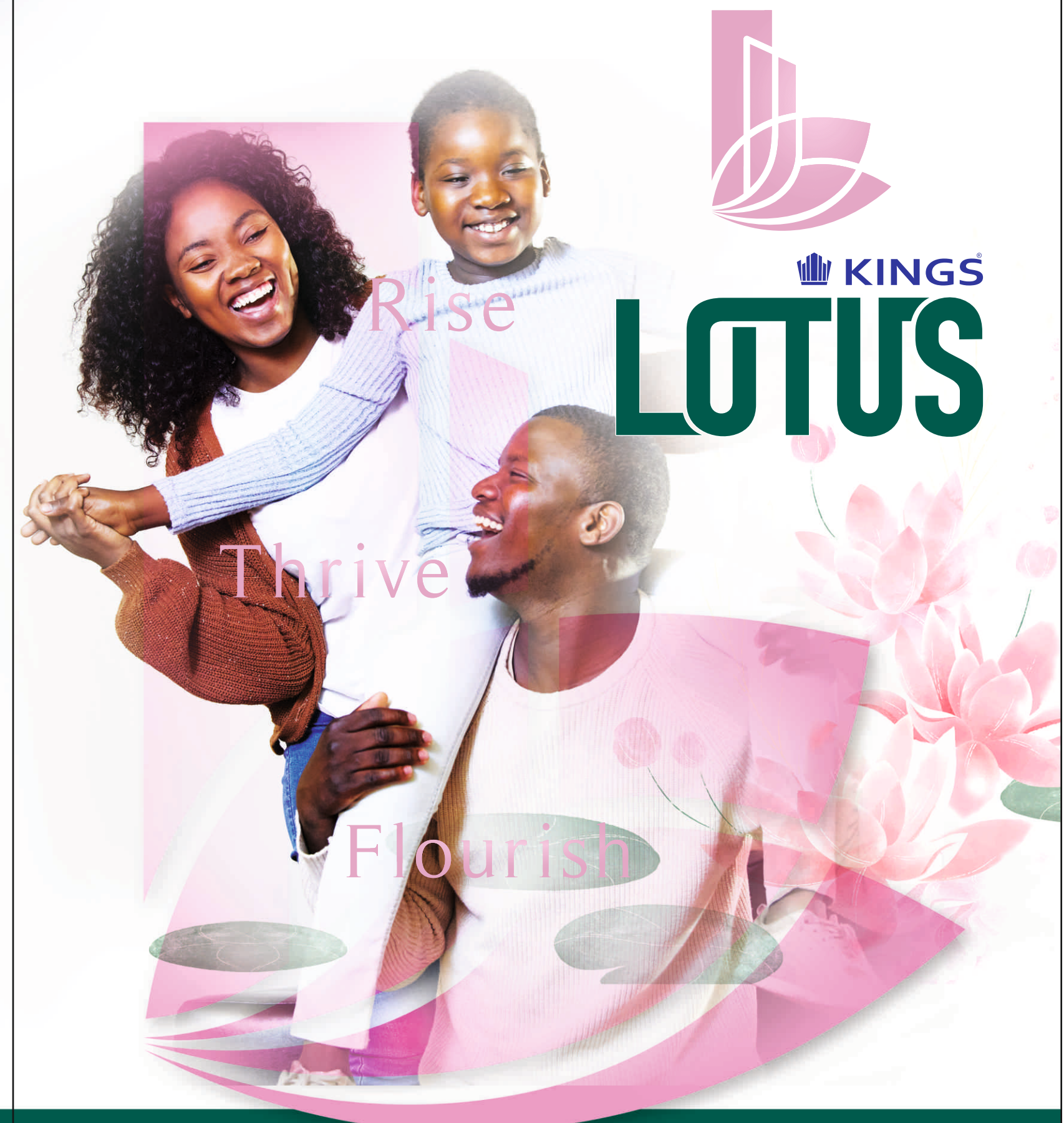
ISO 9001: 2015 CERTIFIED



CONTACT US: 0700 090 060 | 0702 858 609
 sales@kingsdevelopers.com, info@kingsdevelopers.com | www.kingsdevelopers.com
 Royal Group Headquarters, Karen Road, Opp. The Water Front, Karen, Nairobi, Kenya.

DISCLAIMER: Perspectives shown in the Brochure are an artistic impression. The plans are subjected to changes / modifications / amendments (without notice) for better layout, as per suggestions of the Architects and/ or as per requirement of the Nairobi Council and / or all other concerned authorities. All the amenities, facilities etc., are subject to the approval of the concerned authorities and subject to the changes, if required. Some renderings and maps are artist's impressions and not actual depictions of the buildings or landscaping. A developer does not warrant or assume any legal liability or responsibility for the accuracy or completeness of any information disclosed.

Also Note: The Room Layout, Plans, Photos shown with Furniture and other electronic gadgets are for representation only for an easier visualization of the layout.



A PREMIUM HOUSING PROJECT

www.kingsdevelopers.com

Welcome to Lotus



Rise, Thrive, Flourish

Inspired by the graceful, resilient, and timeless lotus flower, Kings Lotus is more than just a residence- it is a sanctuary where beauty, strength, and serenity come together. Like the lotus, which thrives despite its surroundings, Kings Lotus is designed to embody these very qualities, offering a home that supports growth, renewal, and a flourishing lifestyle.

Nestled in a prime location along Gataka Road in Ongata Rongai, it seamlessly blends modern elegance with everyday convenience, ensuring an unparalleled living experience where life blossoms effortlessly.

A Home that Grows With You.

www.kingsdevelopers.com

Flourish
Thrive
Rise





Designed for Elegance, Built for Strength

The lotus is a symbol of perfection—delicate yet enduring, beautiful yet strong. At Kings Lotus, every home reflects this balance, combining contemporary aesthetics with robust construction. Our thoughtfully designed residences embrace natural light, open spaces, and high-quality finishes, ensuring that your home is both stylish and functional.

House Typology

- 2 Bedroom Standard – 665 sq. ft.
- 2 Bedroom Master Ensuite – 740 sq. ft.
- 3 Bedroom Master Ensuite with balcony – 950 sq. ft.
- 4 Bedroom Maisonette with balcony and SQ – 1,580 sq. ft.

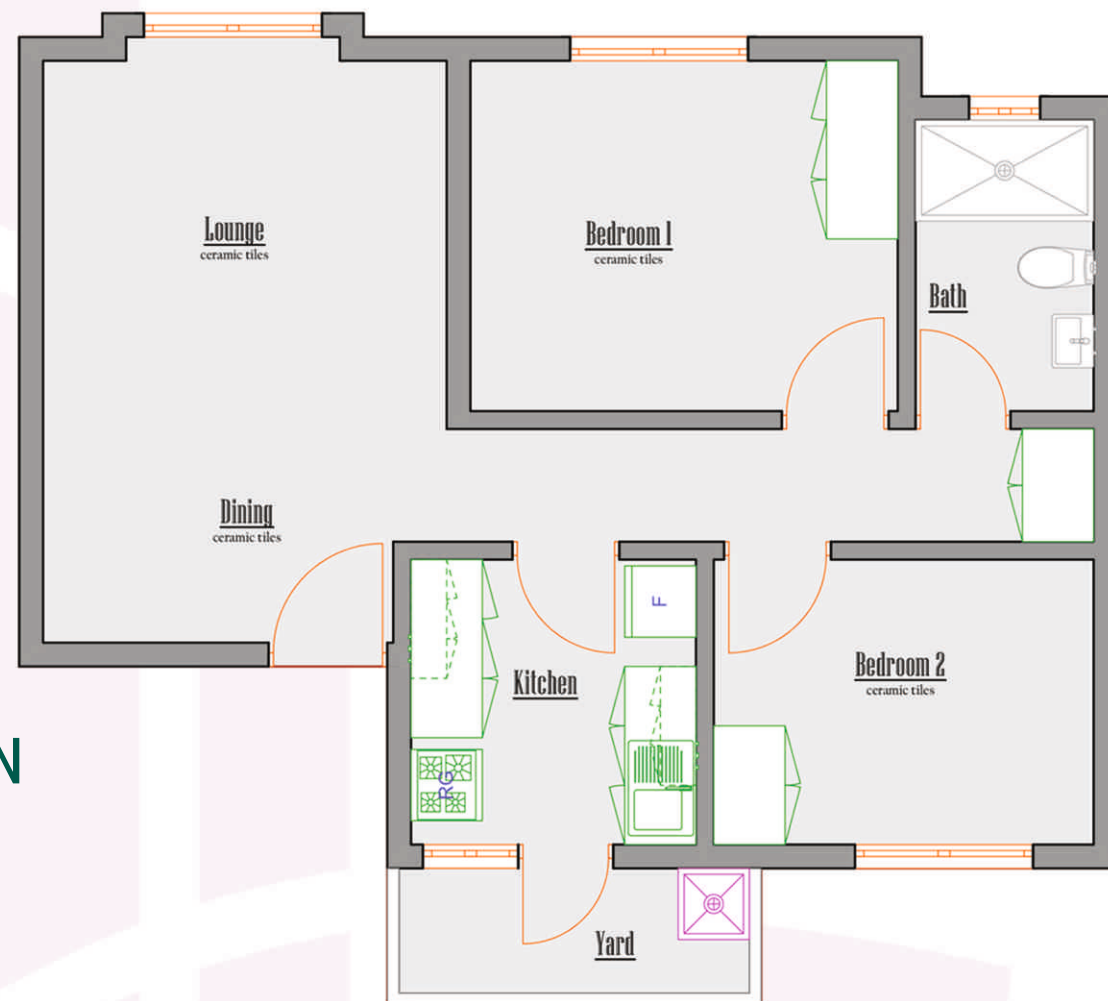
Each home is meticulously crafted to provide comfort, efficiency, and timeless appeal.

At Kings Lotus, comfort isn't
just a feature - it's a way of life.

www.kingsdevelopers.com

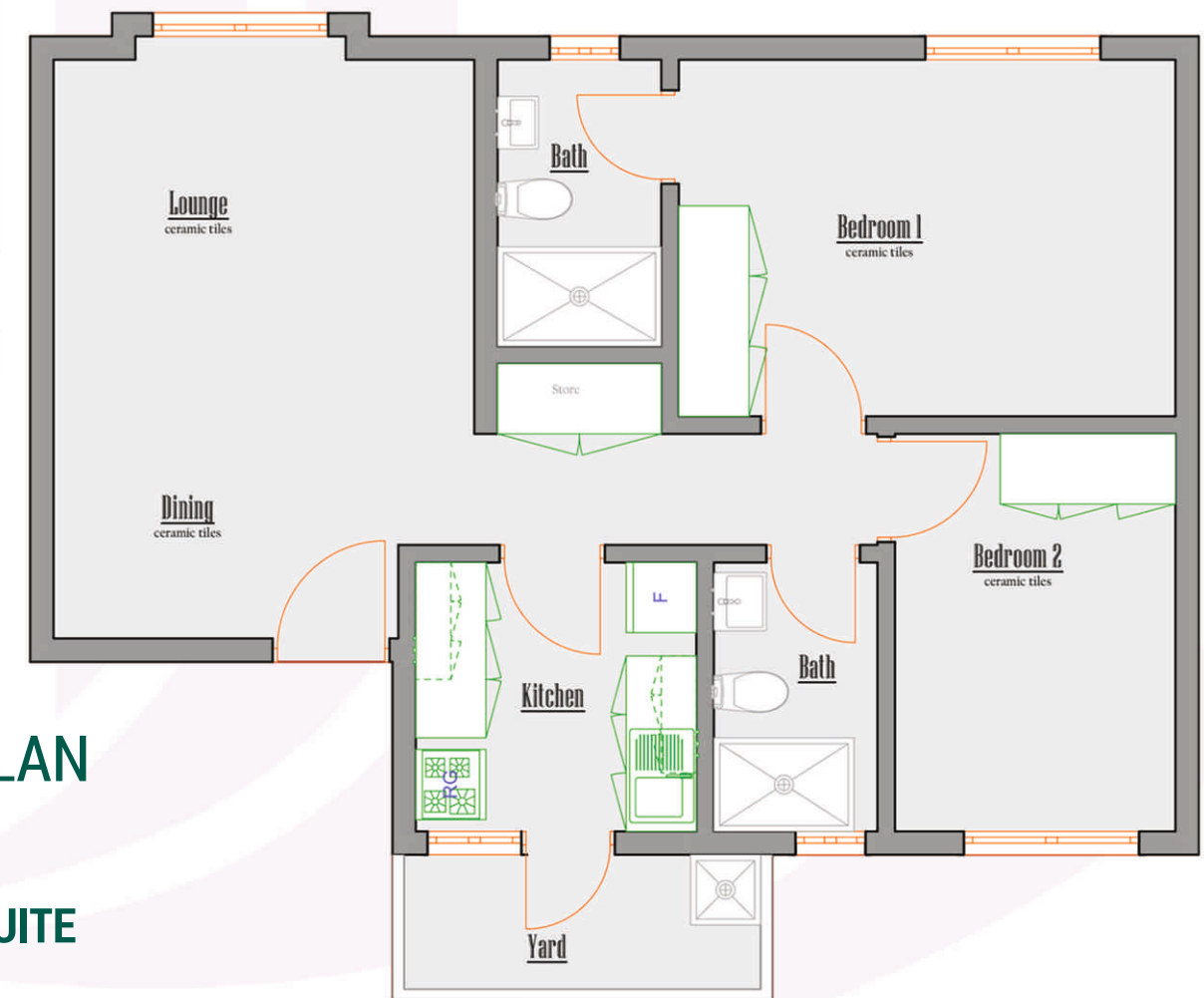
LAYOUT PLAN

**2 BEDROOM
STANDARD
665 Sqft
84 Units**



LAYOUT PLAN

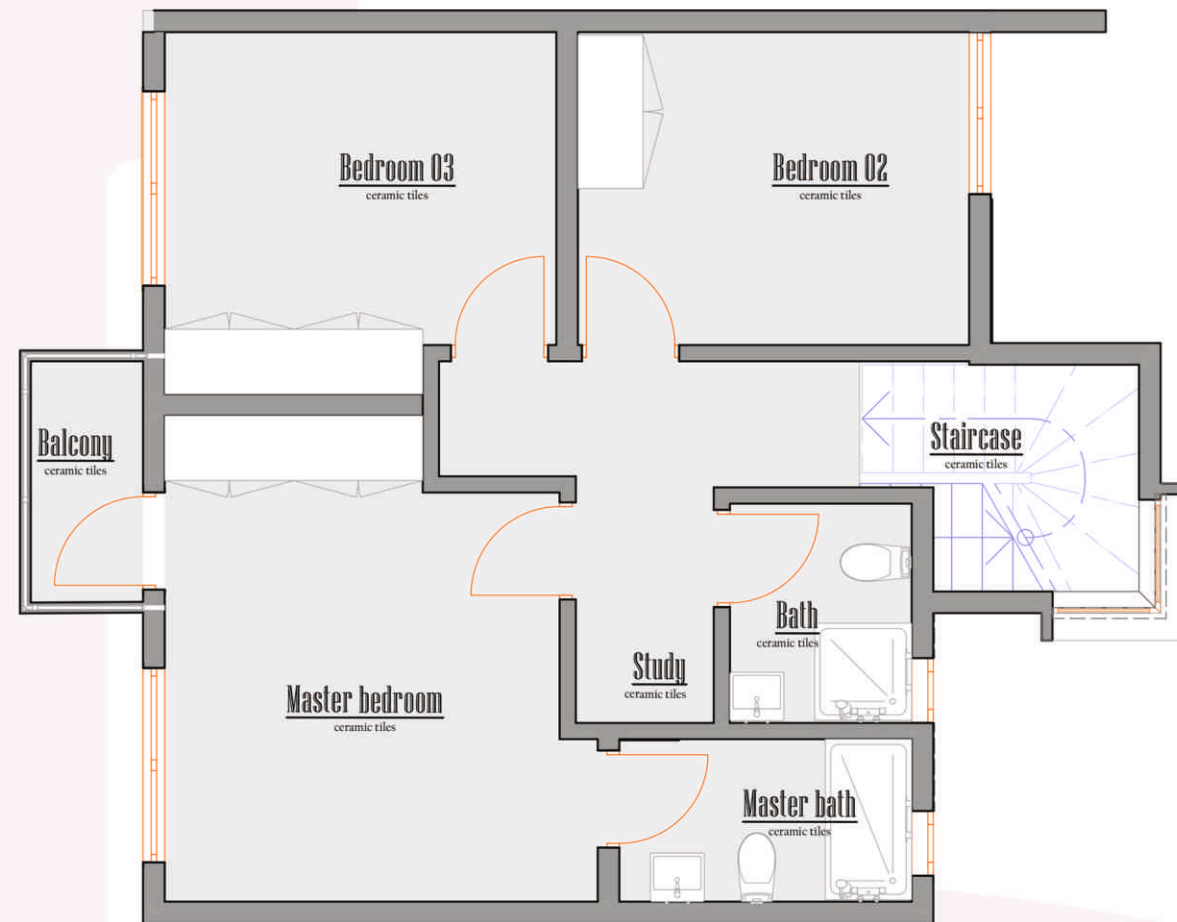
**2BEDROOM
MASTER ENSUITE
740 Sqft
84 Units**



Rise, Thrive, Flourish
www.kingsdevelopers.com

LAYOUT PLAN

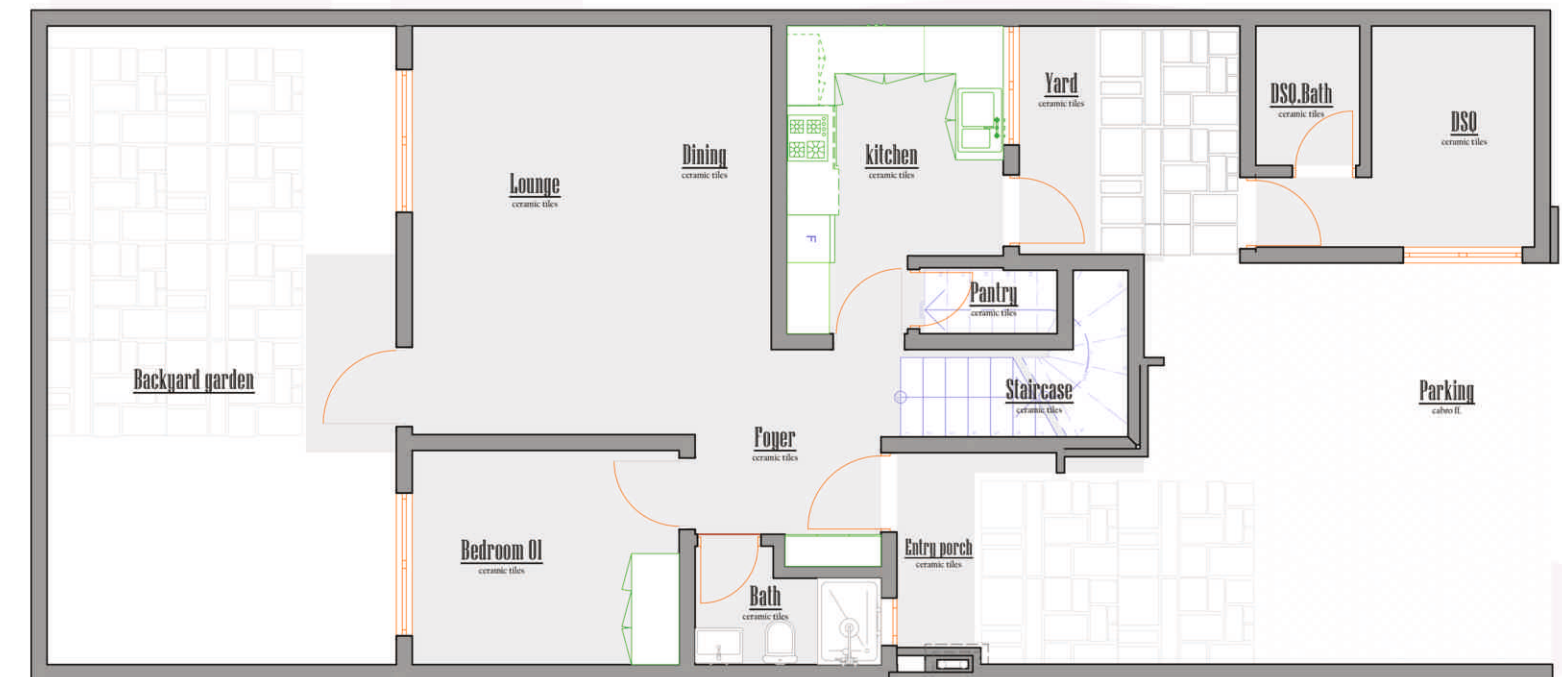
4 BEDROOM MANSIONETTE with SQ and balcony



UPPER FLOOR



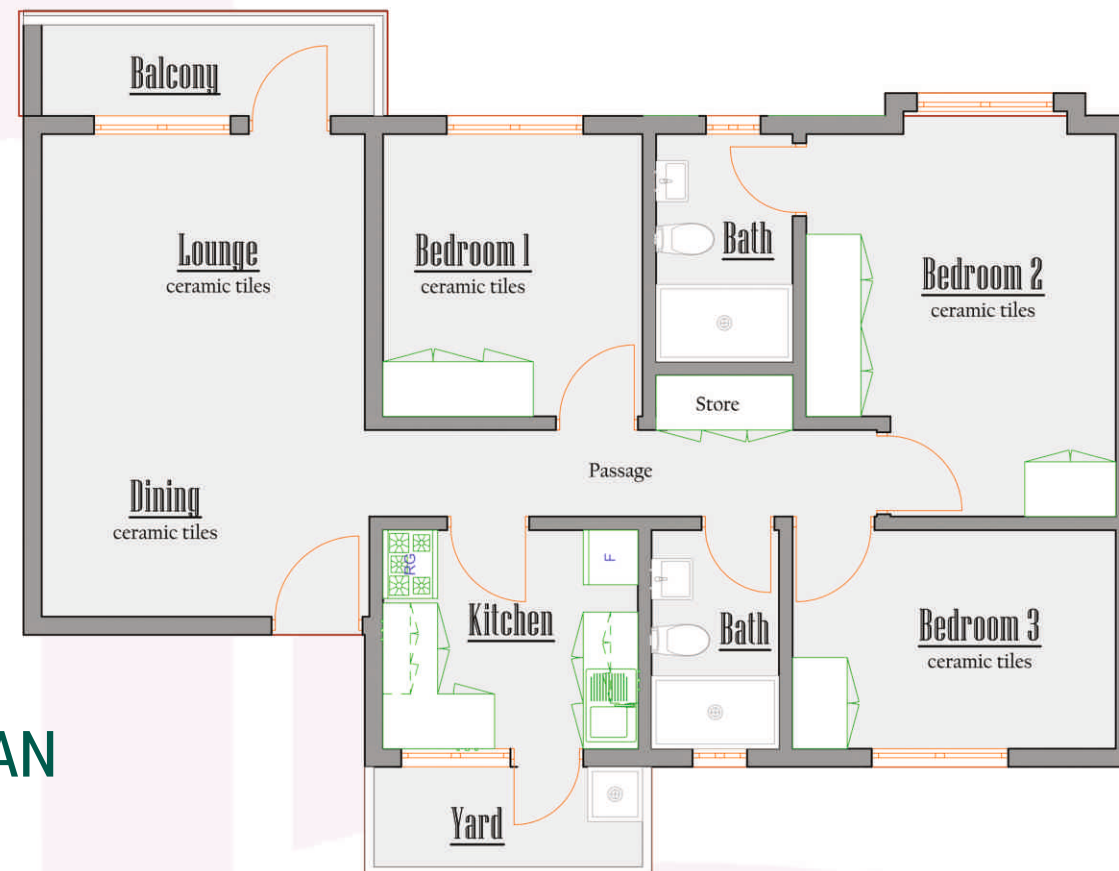
1580 Sqft | 28 Units



GROUND FLOOR



Rise, Thrive, Flourish
www.kingsdevelopers.com



LAYOUT PLAN

**3 BEDROOM
MASTER ENSUITE**
with balcony
950 Sqft
112 Units



Rise, Thrive, Flourish
www.kingsdevelopers.com



SMART & SUSTAINABLE LIVING



A Home
That Evolves
with You

Amenities-

- Lush Landscaped Gardens –
Tranquil green spaces perfect for relaxation, morning walks, or unwinding after a long day.
- Ample & Secure Parking –
Well-planned parking to ensure convenience for residents and guests.
- 24/7 Security & CCTV Surveillance –
Round-the-clock security with controlled access
- Children's Play Area & Family Spaces –
Safe zones designed for play & exploration
- Community Clubhouse –
An elegant space for social gatherings, meetings, and activities.
- Secured Boundary Wall –
A fortified perimeter ensuring safety and privacy
- Solar Lights in All Common Areas –
Sustainable lighting for safety & reduced power consumption.
- Borehole –
A reliable water supply system, ensuring uninterrupted clean water.
- Anti-Termite Foundation –
Advanced construction treatment to safeguard your home
- 1 High-Speed Elevator per Block –
seamless access to every floor with modern, efficient lifts.
- Cabro Paved Driveways –
Well-structured roads within the estate
- Controlled Access with Security Checkpoints –
A gated community with monitored entry points
- Provision for TV Points –
Pre-installed TV points for seamless entertainment setup.
- Provision for Gas Cylinders in Kitchen Yard –
A safe and convenient space for gas cylinder storage.
- Well-Equipped Shopping Complex with Retail Shops –
A vibrant commercial space catering to everyday essentials and lifestyle needs.